



京華山一

Core Pacific - Yamaichi

讓您財富節節領先

Putting Your Wealth to Work



I Mission

Mission:

To be a comprehensive financial conglomerates and provide integrated financial services in the Greater China Region.





II Company History

1969 - Core Pacific - Yamaichi International (H.K.) Limited was established in Hong Kong. (Formerly known as Yamaichi International (H.K.) Limited)

1998 - In January 1998, Core Pacific Group acquired the Hong Kong operation of the Yamaichi Company, once the fourth largest Japanese securities company, but which had failed as a result of the Asian financial crisis. The company was renamed Core Pacific-Yamaichi International (H.K.) Limited in February 1998. In the following years, Core Pacific-Yamaichi developed its Greater China focused securities business on the initial foundation laid by Core Pacific Securities International.





II Company History

2002 - Core Pacific Yamaichi was named the best small cap IPO house of 2002 by Magazine of Finance Asia.

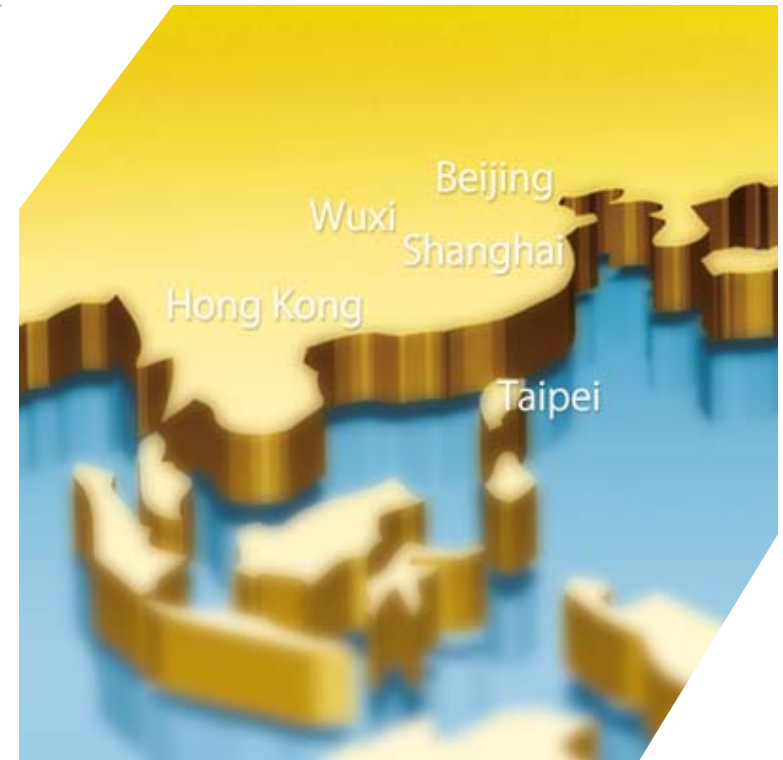
2014 - In order to facilitate the long-term development of our group, we have completed a major corporate restructuring with an aim to build ourselves into a professional and comprehensive conglomerate focusing on financial wealth management. In the restructure, we founded Core – Pacific Financial Group Limited as a holding company to spearhead the operations across the group to enhance our efficiency in providing comprehensive financial services in the Greater China Region. The holding company, headquartered in Hong Kong with Offices in Beijing, Shanghai, Wuxi, Taipei and California, building a strong and powerful platform of comprehensive financial services network.





II Company History

2016 - Core Pacific-Yamaichi Securities (H.K.) Ltd. merged with Core Pacific-Yamaichi International (H.K.) Ltd. on July 1, 2016 with the approval of the Hong Kong Securities and Futures Commission (SFC), aiming to enhance our operating efficiency, strengthen the group's assets base, provide integrated services to our clients as well as satisfy diversified client needs. The merged entity retains the name of Core Pacific-Yamaichi International (H.K.) Ltd., or (“CPYI”), to carrying out all the dealing and advising of securities businesses of our group.





III Company Structure

CPY has a strong shareholder base consisting of Core Pacific Group together with its listed subsidiaries China Petrochemical Development Corporation (Stock code: 1314. TT) and BES Engineering Corporation (Stock code: 2515. TT).

Core Pacific Group focuses operations in the Greater China Region with business coverage ranging from infrastructure and real estate, petrochemicals, energy technology, entertainment and leisure, securities and financial services as well as investment through its related entities in a diversified business strategy. Core Pacific Group acquired the Hong Kong and PRC operations of the Japan's Yamaichi Securities in 1998, the first time in history of a Chinese company to acquire a major Japanese company.





IV Scope of Services

- Global Equities
- Global Futures
- Global Fixed Income
- Wealth Management
- Asset Management
- Underwriting and Placements
- Private Equity
- Commercial Factoring
- Research and Analysis
- Employees Share Award Schemes Service





V Global Equities, Derivatives and Futures Sales Trading Services

Our head office is located in the Wanchai Commercial area, as well as the 3 branches located in Cheung Sha Wan and Yuen Long providing securities and futures brokerage, bonds trading, wealth management, corporate finance, underwriting and placement, financial advisory , and other investment-related professional services.

CPY's clients range from institutional investors to high net worth individuals and retail investors.





V Global Equities, Derivatives and Futures Sales Trading Services

In order to satisfy different client needs, our sales and trading teams provide tailored professional services. Through our local and overseas offices, coupled with our advanced electronic trading platforms, CPY is well equipped in providing clients with comprehensive and dedicated services as well as timely investment recommendations and efficient order executions.





VI Fixed Income Trading Services

CPY's fixed income professionals select quality Bond products from around the world, providing Diverse investment ideas and opportunities.

The information on our website is frequently updated, enabling our clients to make a highly informative decision to capitalize on any of such investment opportunities.





VI Fixed Income Trading Services

In order to accommodate clients with different investment objective and risk appetite, CPY offers tailored investment ideas with a wide range of fixed income products provided to our clients, including AAA-rating to high-risk junk bonds.

We also offer stable but innovative short-term fund shelter investment tools through investing in REPO, a money market instrument attached with a repurchase agreement to suit our clients' need.





VII Corporate Finance

CPY's corporate finance team is built up of experts from the Greater China region, possessing diversified experience with sound local knowledge and powerful global vision. The team provides comprehensive financial services to enterprises in Hong Kong, China, Taiwan and Japan.

Having established extensive experience in corporate finance, research and share placement, coupled with a strong client network, CPY has become one of the most active sponsors of companies listing in Hong Kong. Since 1998, CPY has sponsored and successfully listed more than 40 companies in Hong Kong, topping its peers.





VII Corporate Finance

Former Yamaichi International, possessing B-share trading seats and an underwriting license in Shanghai, had taken an active role in the placement of B shares in China. Following the acquisition of Yamaichi International, CPY consolidated its status as a Chinese-owned international investment banking group, successfully merging the expertise and experience of the two companies.

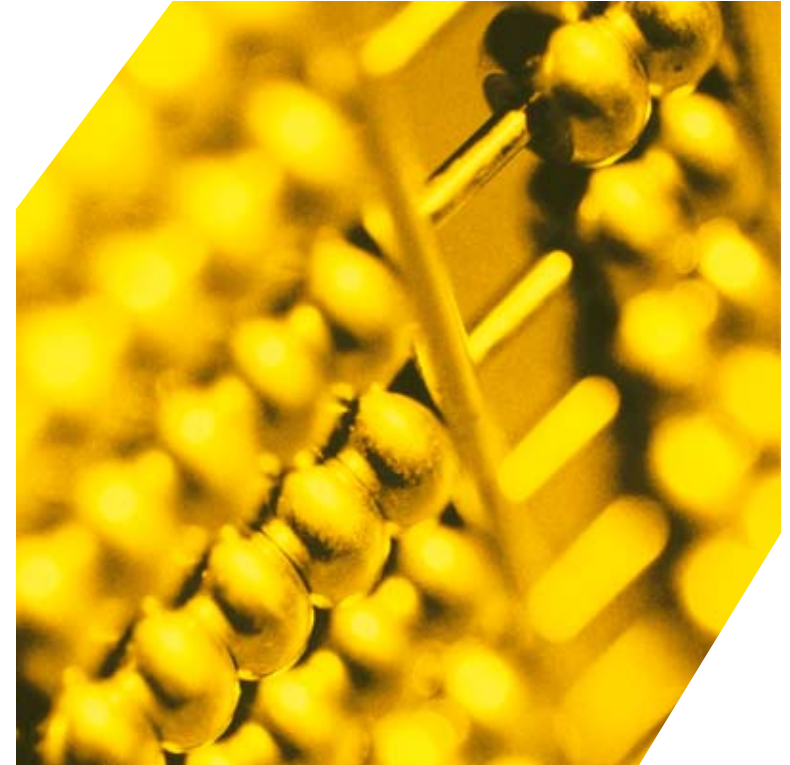
In addition to Hong Kong's corporate finance team, CPY also has highly experienced professional teams in Beijing, Shanghai. Coupled with a thorough understanding of the laws and regulations of China's investment market, the teams are dedicated to providing comprehensive and high quality investment banking services.





VII Corporate Finance

CPY's corporate finance services include: IPO sponsorship; underwriting and placements; mergers and acquisitions; private placements; asset acquisition; and direct investment. Besides, CPY also provides other value-added services, such as business consultancy, strategic alliance introduction, and evaluation of strategic investors.



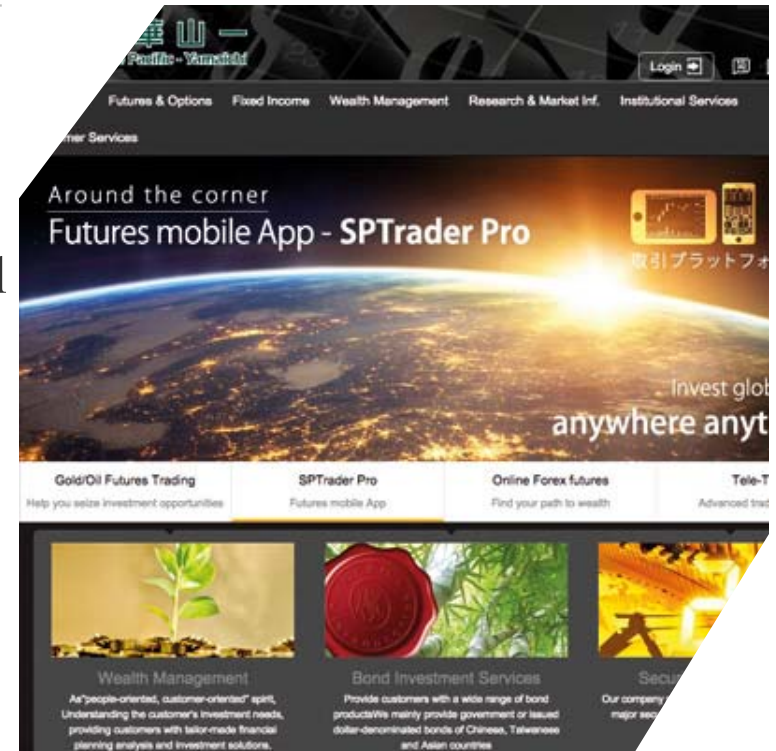


VIII Electronic Financial Services

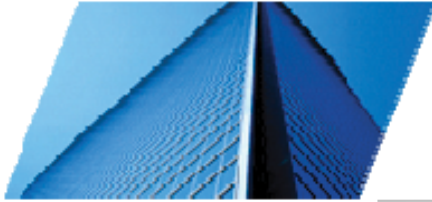
e-Commerce is evolving at a remarkable pace and has brought about infinite business opportunities. CPY's mission is to maintain a competitive edge by leveraging off both its physical operation as well as its virtual business model.

Online trading offers efficiency and convenience, helps surpass all geographical boundaries and provides a diversified range of financial services to clients around the world.

- Electronic Online Stock Trading Service
- Electronic Online Futures Trading Service
- Mobile Phone Stock Trading Service
- Electronic Online Shanghai-Hong Kong Stock Connect Trading Service
- Electronic Online Shenzhen-Hong Kong Stock Connect Trading Service



CPY financial website:
www.cpy.com.hk



IX Share Award/Share Option Scheme-Trustee Service

CPY provides Trustee Service to Listed Company as trustees for handling their employee share award and share option scheme. We are experienced in fulfilling fiduciary duties as trustee and offer related management and operations.



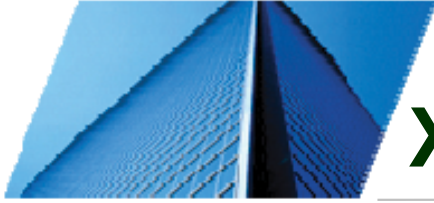


X Research Team

CPY's research team is objective when conducting analysis. The impartiality of our research reports not only increases investor's confidence, but also enhances CPY's status in the investment market.

Our research professionals cover many sectors, specializing in selected China sectors, as well as market trends surrounding H shares and Chips stocks.

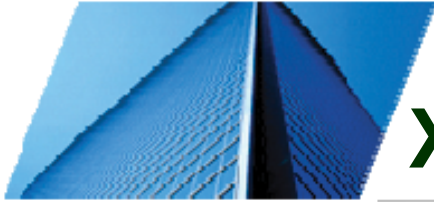




XI CPY Factoring Receivables Financing

Jiangsu Core Pacific – Yamaichi Commercial Factoring Co., Ltd. (“CPYCF”) is a commercial factoring company established jointly by Core Pacific – Yamaichi Commercial Factoring (H.K.) Holding Limited and Wuxi city government investment platform — Wuxi New District Technology Financial Venture Investment Group. CPYCF provides trade financing to enterprises by way of assigning receivables.





XI CPY Factoring Receivables Financing

CPYCF provides a variety of trade financing programs with international vision, localized operational capabilities with cross-border integrated financial channels. CPYCF adopts a safe, fast and precise risk control concept, backed by both online and offline fully integrated operational models. CPYCF seeks sustainable growth for shareholders, employees, customers and social community to become the leader in the field in the Greater China region's commercial factoring sector.





XII Wealth Management

Core Pacific - Yamaichi Wealth Management Group, established by the Core Pacific – Yamaichi Group, is dedicated to serving affluent individuals emerging from the Greater China Region. We are committed to developing a leading regional wealth management platform providing an array of customized wealth management services for our premier clients.





XII Wealth Management

Core Pacific - Yamaichi Wealth Management Group is well positioned to cater the enormous wealth management market of the Greater China Region, thanks to its unique presence in Hong Kong – an international financial hub as well as a major international financial and offshore wealth center. We keep a close eye on the global financial markets and offer our moderate, and insightful researches on a regular basis, ensuring that our clients could fully enjoy the exclusive advantages of offshore wealth management.

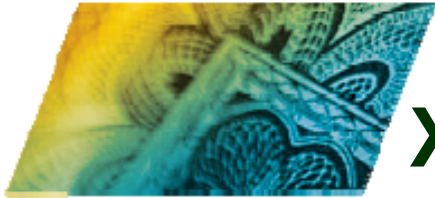




XII Wealth Management

Core Pacific - Yamaichi Wealth Management Group provides a range of wealth management solutions customized to your needs. We implement every strategy on portfolio management to reduce your risks by diversifying and expanding the range of investment. We also offer comprehensive and professional consultation services to our clients with an aim to maintain their portfolios with stable growths.





XIII Awards

Finance Asia awards Core Pacific - Yamaichi Capital as Best Small Cap IPO House for the Year 2002.

EVENT AWARDS 星期二 第二十七頁 信報財經新聞

FinanceAsia



Was 2002
Merrill's toughest year in Asia?

BEST SMALL-CAP IPO HOUSE

Core Pacific-Yamaichi Capital Ltd

Core Pacific Yamaichi Capital epitomizes a true Greater China approach to investment banking. Core Pacific-Yamaichi Capital is one of the leading integrated securities houses in Taiwan, and acquired the Yamaichi operation in Hong Kong in 1998 - later merging its Yuanfa Securities Hong Kong subsidiary in 2000. What emerged was an investment bank that straddled Taiwan

京華評為最佳小型股投資銀行

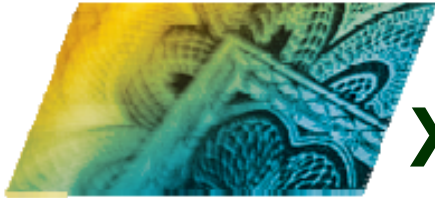
京華山一企業融資獲得著名國際性雜誌金融亞洲 (Finance Asia) 評選為2002年度最佳小型股 (兼資五億港元以下) 首次公開招股的投资銀行。

京華山一執行董事暨企業融資部主管盧天銘表示, 自1998年開始, 京華山一主攻一級市場的集資 (即IPO上市), 過去四年, 公司已為近四十家中外企業在香港主板及創業板上市, 按照上市公司數目, 京華山一名列第一, 成爲最活躍保薦人, 在創業板市場保薦二十五家企業, 獲佔半數。

除資本市場集資外, 京華山一亦活躍於大中華區內的收購兼併活動, 盧天銘強調, 收購兼併業務當然亦是公司目前的業務重點。正當中國已加

世貿組織及內地收購兼併及條例日益完善, 公司大量機會湧現在牽涉作爲買方及賣方的

動。公司正積極業務, 處於一及位置去擴



XIII Awards

www. cpefinance.com - awarded "Hi-Tech Web Awards" as one of the Best Three Financial Websites in Hong Kong, honoured by the prestige Hong Kong Ming Pao Newspaper Publishing Group.

According to the renowned Hong Kong NEXT magazine, CPY internet stock trading platform services ranked first amongst other Hong Kong financial institutes in terms of speed of stock transaction execution.

交易速度大比併

	買入股票需時	名次	沽出股票需時	名次
京華山一	2秒	1	1秒	1
上海商業	3秒	2	1秒	1
新鴻基	9秒	8	4分鐘32秒	14
Boom.com	1分鐘	10	4分鐘	12
恒生	5分鐘	12	30秒	8

註：測試時間為3月7日和3月8日下午港股開市後，以同樣價位買賣一手中國石油（857）作測。永隆在3月7日下午曾出現系統故障及螢幕只顯示「9999系統」等字句。上商在3月8日下午開市時，亦因系統繁忙，令買賣指令無法執行，為時約10分鐘。

最佳財經網站 雷霆頂級網站大賞 Hi-Tech Web Awards 2001
Core Pacific-Yamaichi e-financial Ltd www.cpefinance.com

十大最抵網上證券戶口

佣金平絕全行的，首選京華山一，只收百分之零點一，比同行平一半有多。

證券行	佣金	免費	免費	至荷	股息
京華山一	0.1% (\$78)	免費	免費		股息0.5%
新鴻基	0.138% (\$68)	免費	免費		股息0.5%
凱基	0.15% (\$50)	免費	免費		手續



XIII Niche and Value

Global Vision

CPY's management team comprises of financial elites from Hong Kong, Taiwan, China and Japan. With their extensive experience, CPY has developed into an influential global investment banking group with a solid foundation. By leveraging off this vast array of expertise, creativity and global vision, CPY is able to provide excellence financial services to clients.

Greater China Focus

CPY is a multi-faceted finance and securities company registered in Hong Kong, with a strong Taiwan shareholders background. We pinpoint our core growth focus in Mainland China. Hence, CPY is innate with the basic ingredients to successfully integrating the three elements - capital, skills and markets - for the Greater China region.





XIII Niche and Value

Wealth of Experience

CPY is one of the earliest Taiwan securities company entering the PRC for developing its capital market. Currently we have a team of professionals based in Beijing and Shanghai. The extent of our market captivity and development are both wide and in depth.

Global Network

CPY can channel the capital and product in the U.S. and Japan regions, to the enterprises and investors in the Mainland China, effectively integrating the resources amongst these regions.





XIII Niche and Value

High Flexibility

Through a sound and expanding distribution network, CPY can promptly introduce customized financial products to clients.

Professional Management Team

CPY adopts a modern management structure. Management decision can be made speedily in response to changes in market conditions. We promote diligent teamwork. This enables us to compete in businesses successfully as an elite team.





XIII Niche and Value

Clear Market Positioning

CPY has anchored a clear market positioning with concrete development plans. Since the setting up of branch network to create our brand name as the initial move, we have continued to establish our investment banking business label through the strong presence in the GEM Board. We will continue to excel ourselves to become a comprehensive financial conglomerate in the Greater China Region.





XV CPY

Global Presence

Core Pacific - Yamaichi Financial Group Limited

11/F, China Resources Building,
26 Harbour Road, Wanchai, HK
Tel: (852) 2166 3888
Fax: (852) 2918 0409
URL: www.cpy.com.hk

Core Pacific - Yamaichi Consulting (Shanghai) Co., Ltd.

1605, BEA Finance Tower
66 Hua Yuan Shi Qiao Road
Pudong Shanghai 200120, PRC
Tel: (8621) 6886 6836
Fax: (8621) 6881 5369

Core Pacific-Yamaichi Investment Consulting (Beijing) Co.,Ltd.

Room 1101, Tower One,
Henderson Center 18 Jianguomennei
Street, Dong Cheng District
Beijing 100005, PRC
Tel: (8610) 6518 2871
Fax: (8610) 6518 2877

Jiangsu CPY Commercial Factoring Co., Ltd.

Room 506, Building A, China
Mems-Sensor Park, 200 Linghu Street,
New District, Wuxi, China
214000, PRC
Tel: (86) 51082212889
Fax: (86) 51082212886